

中2~第34回角の二等分線がつくる角~

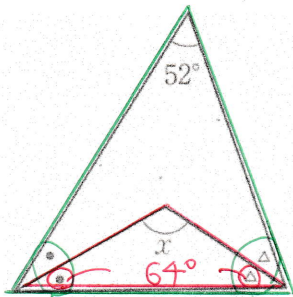
氏名：

解答・解説

例題 次の図で、同じ印をつけた角はそれぞれ等しいです。

∠xは何度ですか。

(1)

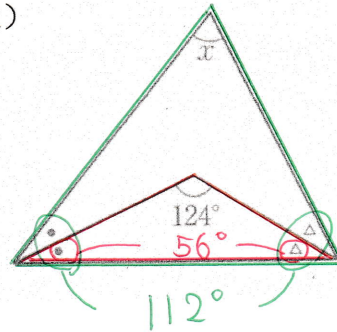


128°

$$\begin{aligned} \bullet + \triangle &= 128^\circ \\ \bullet + \triangle &= 64^\circ \end{aligned} \Bigg) \div 2$$

∠xは $180 - 64 = 116^\circ$

(2)

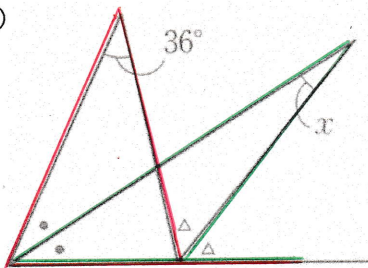


112°

$$\begin{aligned} \bullet + \triangle &= 56^\circ \\ \bullet + \triangle &= 112^\circ \end{aligned} \Bigg) \times 2$$

∠xは $180 - 112 = 68^\circ$

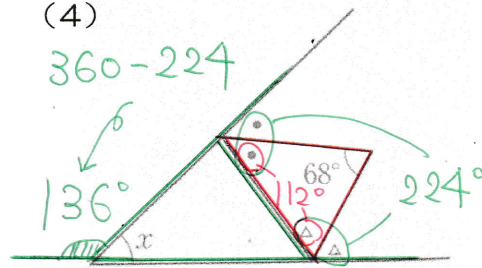
(3)



$$\begin{aligned} \bullet + 36^\circ &= \triangle \\ \bullet + 18^\circ &= \triangle \\ \bullet + x &= \triangle \end{aligned} \Bigg) \div 2$$

∠xは 18°

(4)



360 - 224 = 136°

$$\begin{aligned} \bullet + \triangle &= 112^\circ \\ \bullet + \triangle &= 224^\circ \end{aligned} \Bigg) \times 2$$

∠xは $180 - 136 = 44^\circ$