

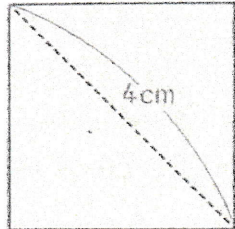
1から学ぶ中学受験算数 ~第7回面積②~

氏名：

解答・解説

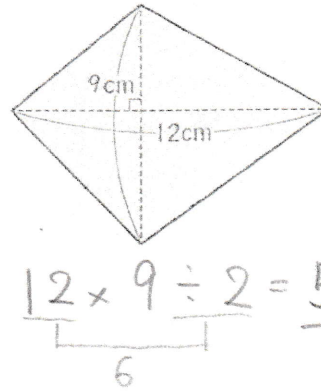
例1 次の図形の面積を求めなさい

(1)



$$4 \times 4 \div 2 = 8 \text{ cm}^2$$

(2)

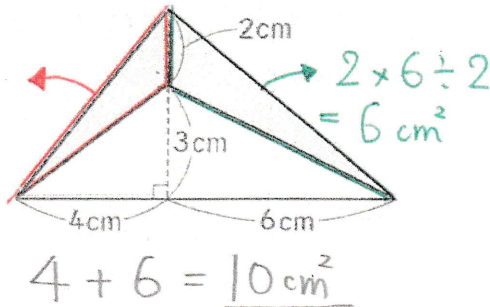


$$12 \times 9 \div 2 = 54 \text{ cm}^2$$

例2 次の図で、かけをつけた部分の面積を求めなさい

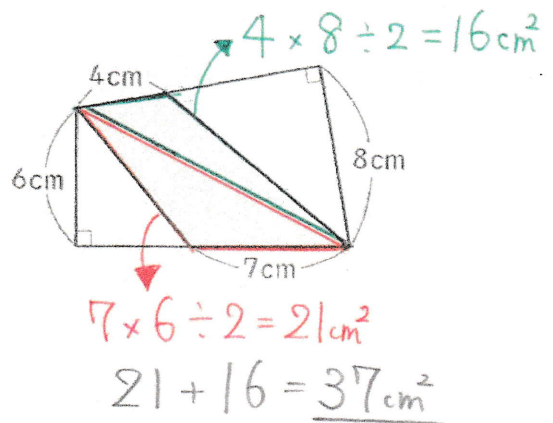
(1)

$$2 \times 4 \div 2 = 4 \text{ cm}^2$$



$$4 + 6 = 10 \text{ cm}^2$$

(2)

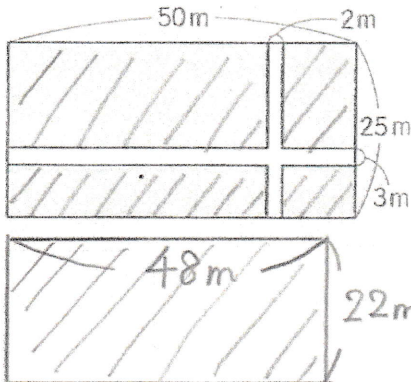


$$7 \times 6 \div 2 = 21 \text{ cm}^2$$

$$21 + 16 = 37 \text{ cm}^2$$

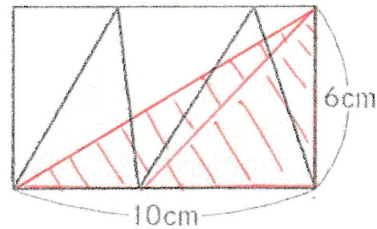
(3)

4つを
合体



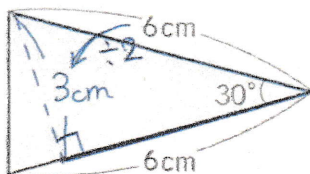
$$48 \times 22 = 1056 \text{ m}^2$$

(4) ☆等積変形を利用!!



$$10 \times 6 \div 2 = 30 \text{ cm}^2$$

例3 次の三角形の面積を求めなさい



$$6 \times 3 \div 2 = 9 \text{ cm}^2$$

